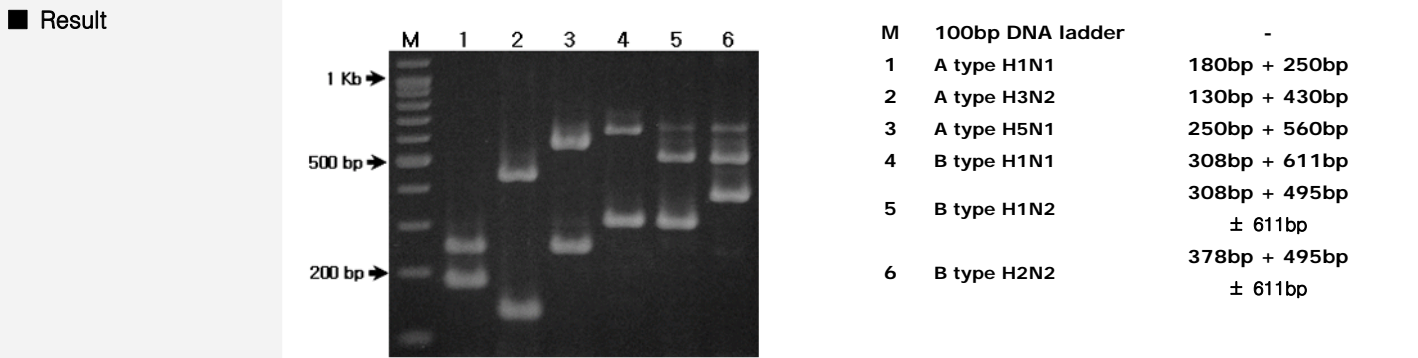
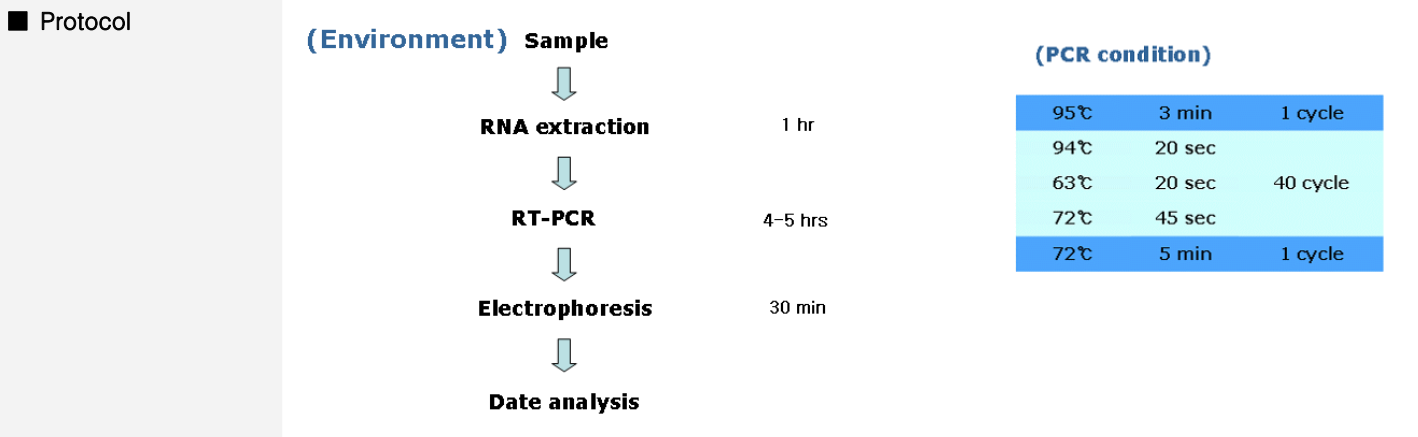


GeneChaser Influenza HANA Multi

Cat. NO.RDM-1134

General description Myxovirus influenzae is RNA virus. Influenza A is cause for world-wide epidemics of an infectious disease, while influenza B can cause local epidemics and influenza C causes only few cases of light symptoms. The RapiGEN GeneChaser Influenza HANA Multi kit enables you type simultaneously both of Hemagglutinin (H) and Neuramidase (N) that the influenza A type and B type have.

Content	Quantity
Positive size marker(5 μ l per test)	110 μ l
Primer mixture(10 μ l per test)	260 μ l
Premixture(1 tube per test)	96 tubes
DNA extraction buffer(100 μ l per test)	10 ml



Interpretation

► Detectable strain: Gene

- Influenza A type H1N1 (180bp + 250bp)
- Influenza A type H3N2 (130bp + 430bp)
- Influenza A type H5N1 (250bp + 560bp)
- Influenza B type H1N1 (308bp + 611bp)
- Influenza B type H1N2 (308bp + 495bp ± 611bp)
- Influenza B type H2N2 (378bp + 495bp ± 611bp)

