

GeneChaser *E. coli* Multi

Cat. NO.RDM-1101

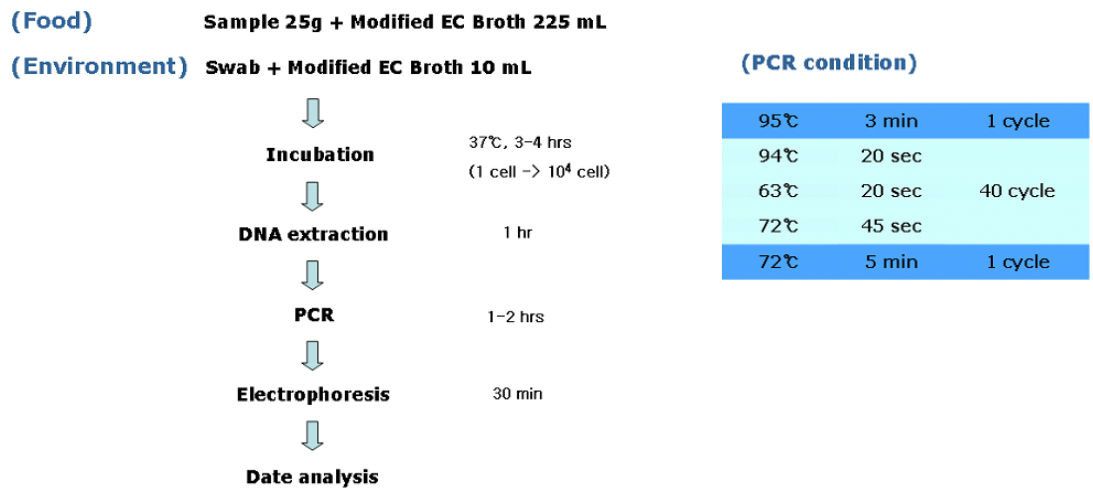
General description

E. coli has been always exist in human's or animal's intestines as normal flora and often cause diarrhea. Serologically, there are five classes of pathogenic *E. coli*: enteropathogenic *E. coli* (EPEC), enteroinvasive (EIEC), enterotoxigenic (ETEC), enterohaemorrhagic (EHEC) and enteroadherent (EAEC). *E. coli* multi kit amplifies specific genes of pathogenic *E. coli* such as enteropathogenic, enteroinvasive, enterotoxigenic and enterohaemorrhagic. The RapiGEN GeneChaser *E. coli* Multi kit amplifies specific DNA targets of pathogenic *E. coli* such as enteropathogenic, enteroinvasive and enterotoxigenic and enterohaemorrhagic *E. coli* at a time by multiplex PCR.

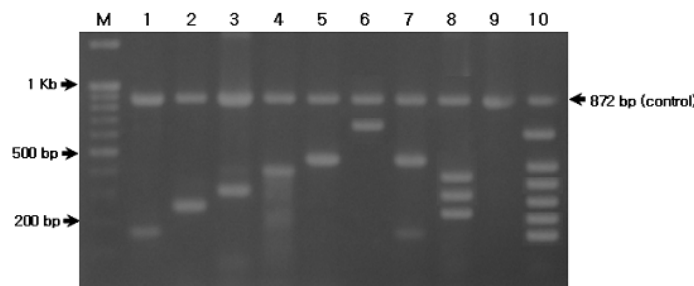
Kit content

| Content | Quantity |
|---------------------------------------|----------|
| Positive size marker(5µl per test) | 110µl |
| Primer mixture(10µl per test) | 260µl |
| Premixture(1 tube per test) | 96 tubes |
| DNA extraction buffer(100µl per test) | 10 ml |

Protocol



Result



| | | | | | |
|---|--------------------------|-------|----|-------------------------|-------|
| M | 100bp DNA ladder | | | | |
| 1 | ETEC (ST) | 168bp | 6 | EIEC (<i>spa</i> gene) | 595bp |
| 2 | EHEC (VT1) | 247bp | 7 | 1+5 | |
| 3 | EPEC (<i>eaeA</i> gene) | 303bp | 8 | 2+3+4 | |
| 4 | EHEC (VT2) | 385bp | 9 | Running control band | 872bp |
| 5 | ETEC (LT) | 452bp | 10 | Positive size marker | - |

Interpretation

- ▶ Detectable strain: Gene
 - ETEC: Heat-labile(LT) (452bp), ST (168bp)
 - EHEC: VT1 (247bp), VT2 (385bp)
 - EPEC: *eaeA* (303bp)
 - EIEC: *spa* (595bp)
- ▶ Detection limit: 10⁴ cell /Tube

