

GeneChaser EAEC Multi

Cat. NO.RDM-1114

General description Enteroadherent *E. coli* (EAEC) to cause diarrhea is three classes of Localized adhesion (LAEC, EPEC), Aggregative adhesion (Agg). Diffused adhesion (DA). The RapiGEN GeneChaser EAEC Multi kit amplifies five specific genes of Enteroadherent *E. coli* (EAEC) such as *ast1*, *aggR*, *daa*, *eaеA* and *bfp*.

Content	Quantity
Positive size marker(5 μ l per test)	110 μ l
Primer mixture(10 μ l per test)	260 μ l
Premixture(1 tube per test)	96 tubes
DNA extraction buffer(100 μ l per test)	10 ml

Protocol

(Food) Sample 25g + Modified EC Broth 225 mL

(Environment) Swab + Modified EC Broth 10 mL

↓

Incubation 37 $^{\circ}$ C, 3-4 hrs
(1 cell \rightarrow 10⁴ cell)

↓

DNA extraction 1 hr

↓

PCR 1-2 hrs

↓

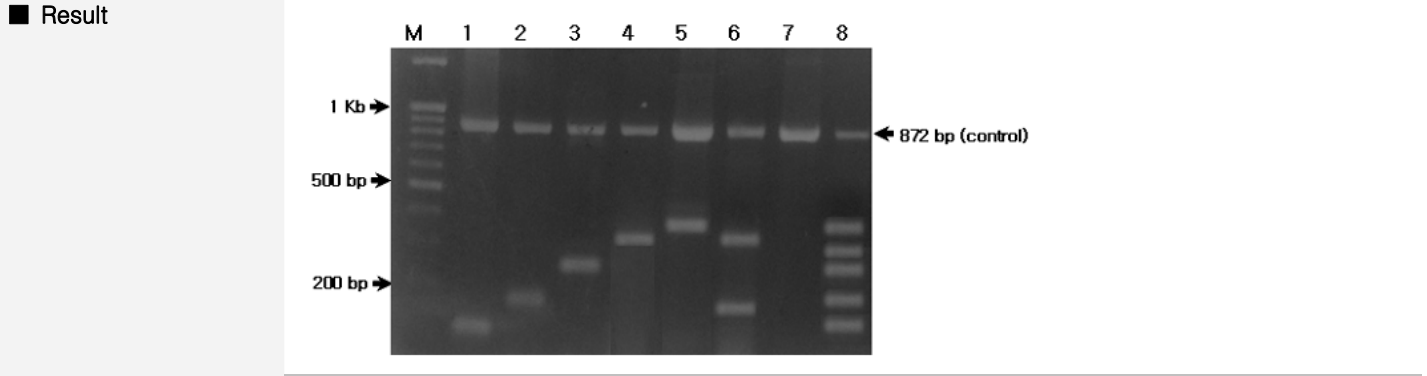
Electrophoresis 30 min

↓

Date analysis

(PCR condition)

95 $^{\circ}$ C	3 min	1 cycle
94 $^{\circ}$ C	20 sec	
63 $^{\circ}$ C	20 sec	40 cycle
72 $^{\circ}$ C	45 sec	
72 $^{\circ}$ C	5 min	1 cycle



M	100bp DNA ladder		
1	EAST1	110bp	6 Localized adhesion (LA) 390bp
2	Aggregative adhesion (Agg)	165bp	7 2+4
3	Diffused adhesion (DA)	243bp	8 Running control band 872bp
4	Localized adhesion (LA)	303bp	9 Positive size marker

Interpretation

- ▶ Detectable strain: Gene
 - EAST1: *ast1* (110bp)
 - EAggEC (Aggregative adhesion, Agg): *aggR* (165bp)
 - DAEC (Diffused adhesion, DA): *daa* (243bp)
 - LAEC (Localized adhesion, LA): *eaеA* (303bp), *bfp* (390bp)
- ▶ Detection limit: 10⁴ cell /Tube

