

GeneChaser Gram Posi 2 *Multi*

Cat. NO.RDM-1132

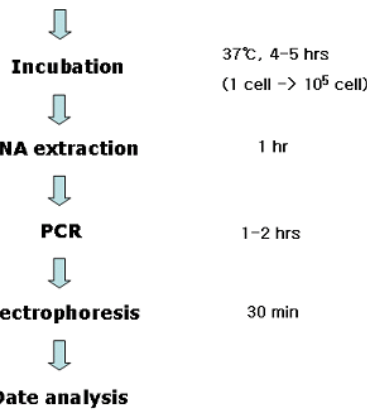
General description The RapiGEN GeneChaser Gram Posi 2 Multi kit can detect rapidly and precisely specific genes of pathogenic bacteria such as *Staphylococcus*, *Campylobacter*, *Bacillus*, *Listeria* and *Clostridium* at a time by multiplex PCR.

Content	Quantity
Positive size marker(5 μ l per test)	110 μ l
Primer mixture(10 μ l per test)	260 μ l
Premixture(1 tube per test)	96 tubes
DNA extraction buffer(100 μ l per test)	10 ml

Protocol

(Food) Sample 25g + Tryptic Soy Broth 225 mL

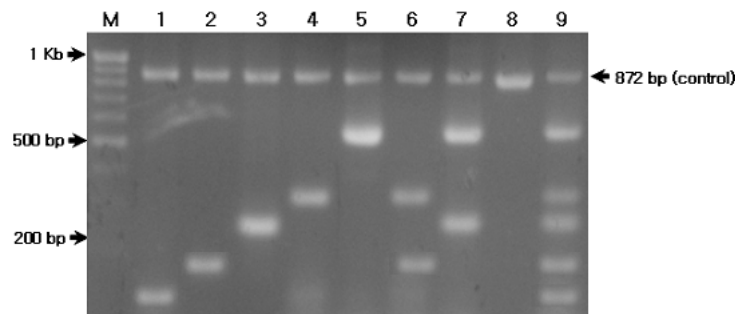
(Environment) Swab + Tryptic Soy Broth 10 mL



(PCR condition)

95 $^{\circ}$ C	3 min	1 cycle
94 $^{\circ}$ C	20 sec	
63 $^{\circ}$ C	20 sec	40 cycle
72 $^{\circ}$ C	45 sec	
72 $^{\circ}$ C	5 min	1 cycle

Result



M	100bp DNA ladder	5	<i>Clostridium perferigens</i> 16S rRNA	576bp
1	<i>Bacillus cereus</i> 16S rRNA	110bp	6	2+4
2	<i>Staphylococcus aureus</i> 16S rRNA	158bp	7	3+5
3	<i>Campylobacter jejuni</i>		8	Running control band
	<i>Campylobacter coli</i>	257bp		872bp
4	<i>Listeria monocytogenes</i> 16S rRNA	324bp	9	Positive size marker

Interpretation

- ▶ Detectable strain: Gene
 - *Bacillus cereus* 16S rRNA: 110bp
 - *Listeria monocytogenes* 16S rRNA: 324bp
 - *Campylobacter jejuni/ coli*: 257bp
 - *Staphylococcus aureus* 16S rRNA: 158bp
 - *Clostridium perfringens* 16S rRNA: 576bp
- ▶ Detection limit: 10⁵ cell /Tube

