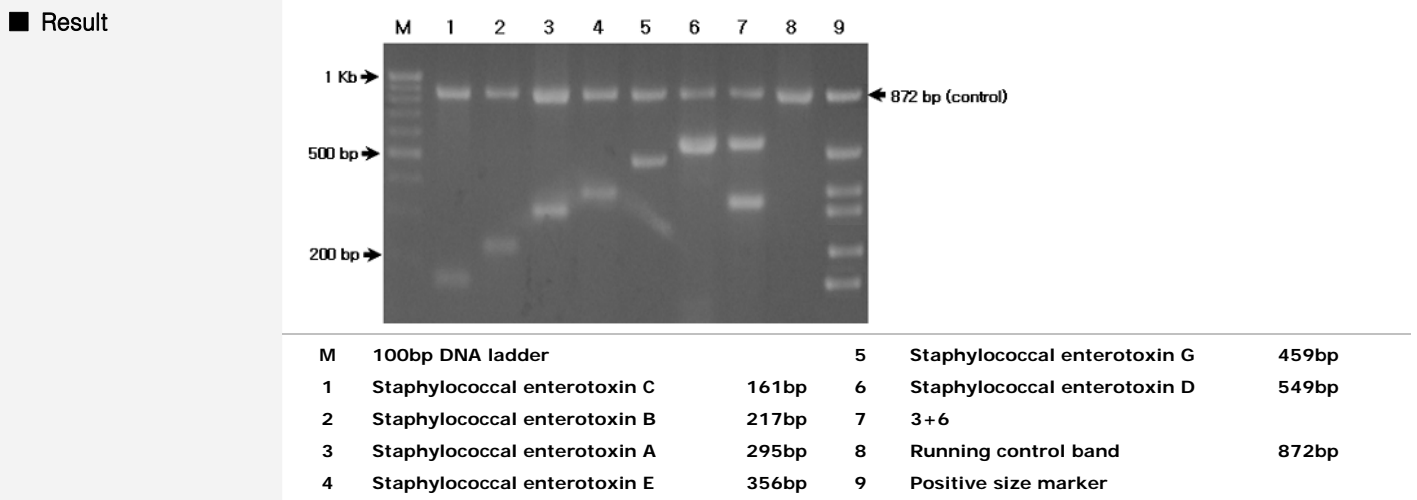
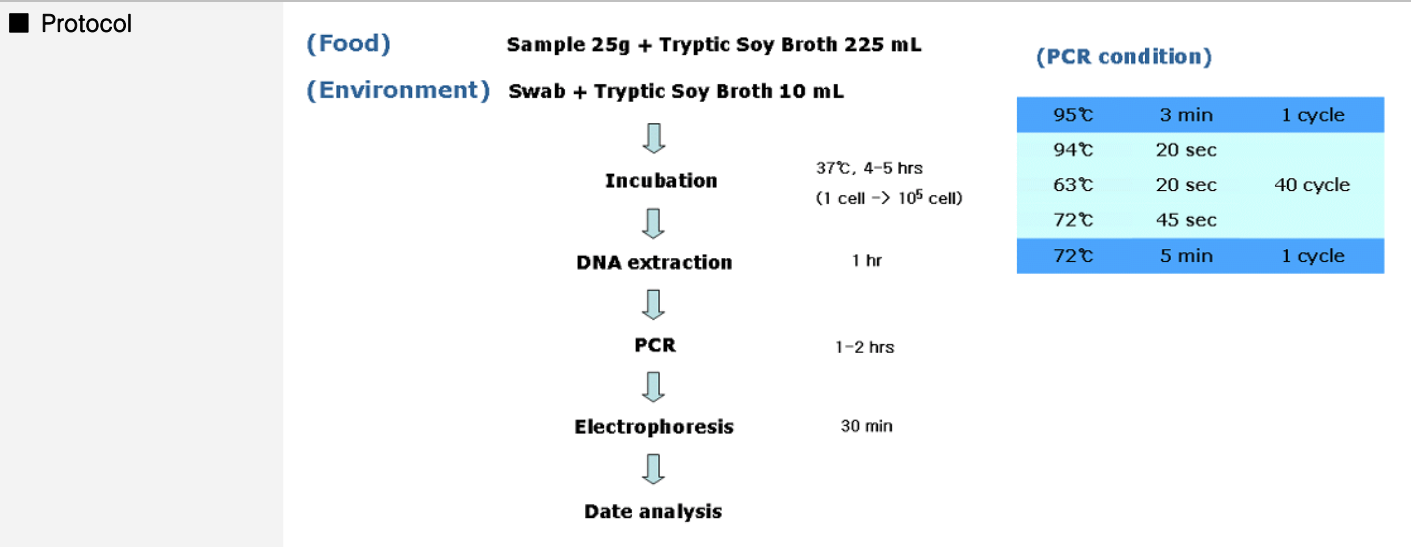


GeneChaser *S. aureus* enterotoxin Multi

Cat. NO.RDM-1131

General description *Staphylococcus aureus* is the most common cause of toxin-caused food poisoning. Over 50% produces enterotoxins and ingestion of small amount can cause food. The RapiGEN GeneChaser *S. aureus* enterotoxin Multi kit amplifies specific DNA targets of *S. aureus* enterotoxin such as enterotoxin A, enterotoxin B, enterotoxin C, enterotoxin D, enterotoxin E and enterotoxin G at a time by multiplex PCR.

Content	Quantity
Positive size marker(5µl per test)	110µl
Primer mixture(10µl per test)	260µl
Premixture(1 tube per test)	96 tubes
DNA extraction buffer(100µl per test)	10 ml



Interpretation

- ▶ Detectable strain: Gene
 - *Staphylococcus aureus*: enterotoxin A (295bp), B (217bp), C (161bp), D (549bp), E (356bp), and G (459bp)
- ▶ Detection limit: 10⁵ cell /Tube

