

GeneChaser EPEC Mono

Cat. NO.RDM-1107

■ General description

Enteropathogenic *Escherichia coli* (EPEC) is a leading cause of infantile diarrhea in developing countries. The RapiGEN GeneChaser EHEC monotype PCR kit amplifies *eaeA* gene of enteropathogenic *E. coli* by PCR and detects pathogenic *E. coli* promptly and precisely.

■ Kit content

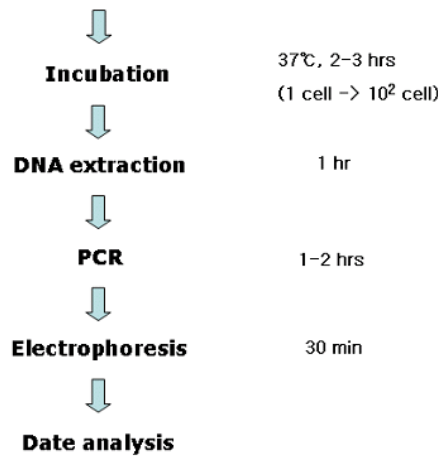
Content	Quantity
Positive size marker(5 μ l per test)	110 μ l
Primer mixture(10 μ l per test)	260 μ l
Premixture(1 tube per test)	96 tubes
DNA extraction buffer(100 μ l per test)	10 ml

■ Protocol

(Food) Sample 25g + Modified EC Broth 225 mL

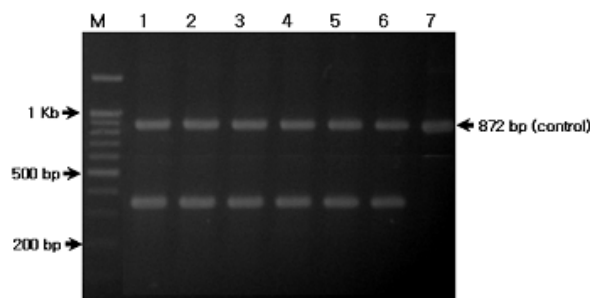
(Environment) Swab + Modified EC Broth 10 mL

(PCR condition)



95°C	3 min	1 cycle
94°C	20 sec	
63°C	20 sec	40 cycle
72°C	45 sec	
72°C	5 min	1 cycle

■ Result



Lane M	100bp DNA ladder
Lane 1	EPEC 10 ⁷ cell /Tube
Lane 2	EPEC 10 ⁶ cell /Tube
Lane 3	EPEC 10 ⁵ cell /Tube
Lane 4	EPEC 10 ⁴ cell /Tube
Lane 5	EPEC 10 ³ cell /Tube
Lane 6	EPEC 10 ² cell /Tube
Lane 7	Running control band

■ Interpretation

- ▶ Detectable strain: Gene
 - Enteropathogenic *E. coli* (EPEC): *eaeA* (303bp)
- ▶ Detection limit: 10² cell /Tube

