

**GeneChaser EIEC Mono**

Cat. NO.RDM-1125

■ General description

Enteroinvasive *E. coli* (EIEC) may produce an illness known as bacillary dysentery. The RapiGEN GeneChaser EIEC monotype PCR kit amplifies specific gene of Enteroinvasive *E. coli* by PCR and detects pathogenic *E. coli* promptly and precisely.

■ Kit content

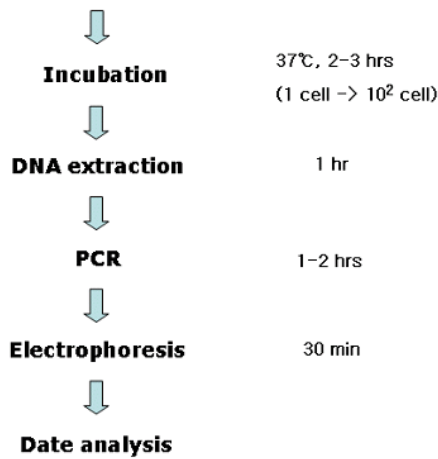
Content	Quantity
Positive size marker(5 $\mu$ l per test)	110 $\mu$ l
Primer mixture(10 $\mu$ l per test)	260 $\mu$ l
Premixture(1 tube per test)	96 tubes
DNA extraction buffer(100 $\mu$ l per test)	10 ml

■ Protocol

**(Food) Sample 25g + Modified EC Broth 225 mL**

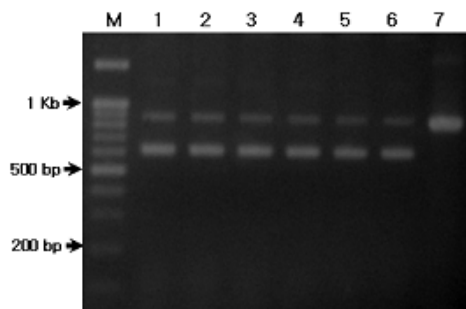
**(Environment) Swab + Modified EC Broth 10 mL**

**(PCR condition)**



95 $^{\circ}$ C	3 min	1 cycle
94 $^{\circ}$ C	20 sec	
63 $^{\circ}$ C	20 sec	40 cycle
72 $^{\circ}$ C	45 sec	
72 $^{\circ}$ C	5 min	1 cycle

■ Result



Lane M	100bp DNA ladder
Lane 1	EIEC 10 <sup>7</sup> cell /Tube
Lane 2	EIEC 10 <sup>6</sup> cell /Tube
Lane 3	EIEC 10 <sup>5</sup> cell /Tube
Lane 4	EIEC 10 <sup>4</sup> cell /Tube
Lane 5	EIEC 10 <sup>3</sup> cell /Tube
Lane 6	EIEC 10 <sup>2</sup> cell /Tube
Lane 7	Running control band

■ Interpretation

- ▶ Detectable strain: Gene
  - Enteroinvasive *E. coli* (EIEC) or Shigella: 620bp
- ▶ Detection limit : 10<sup>2</sup> cell /Tube