

**GeneChaser *Salmonella Mono***

Cat. NO.RDM-1113

■ General description

*Salmonella* is a genus of rod-shaped Gram-negative enterobacteria that causes typhoid fever, paratyphoid fever, and foodborne illness. *Salmonella* spp. frequently contaminates raw meats, poultry, eggs, milk and dairy products, sauces and salad dressing, and chocolate. The RapiGEN GeneChaser *Salmonella* monotype PCR kit specific gene of *Salmonella* spp. by PCR.

■ Kit content

Content	Quantity
Positive size marker(5µl per test)	110µl
Primer mixture(10µl per test)	260µl
Premixture(1 tube per test)	96 tubes
DNA extraction buffer(100µl per test)	10 ml

■ Protocol

**(Food) Sample 25g + Tryptic Soy Broth 225 mL**  
**(Environment) Swab + Tryptic Soy Broth 10 mL**

↓

**Incubation**      37°C, 3-4 hrs  
 (1 cell → 10<sup>3</sup> cell)

↓

**DNA extraction**      1 hr

↓

**PCR**      1-2 hrs

↓

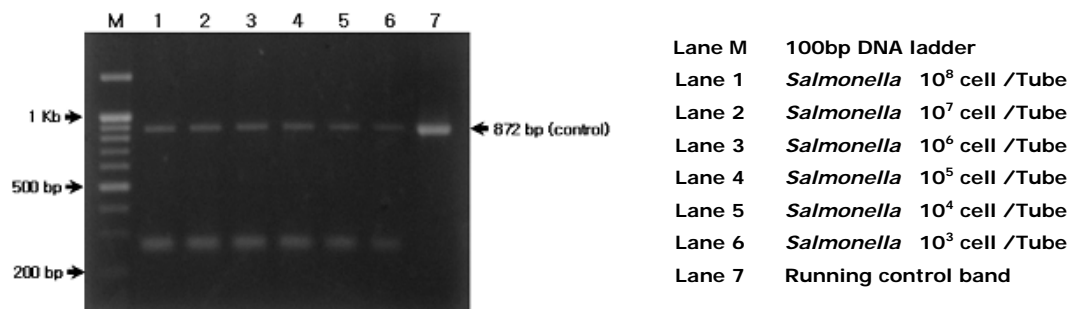
**Electrophoresis**      30 min

↓

**Date analysis**

95°C	3 min	1 cycle
94°C	20 sec	
63°C	20 sec	40 cycle
72°C	45 sec	
72°C	5 min	1 cycle

■ Result



■ Interpretation

- ▶ Detectable strain: Gene
  - *Salmonella* spp. (273bp)
- ▶ Detection limit : 10<sup>3</sup> cell /Tube