

GeneChaser *C. jejuni / coli Mono*

Cat. NO.RDM-1119

■ General description

Campylobacteriosis is a food-borne disease caused by *Campylobacter jejuni* and *Campylobacter coli* with symptoms including diarrhea. *C. jejuni / coli* frequently contaminates raw chicken. Surveys show that 20 to 100% of retail chickens are contaminated. The RapiGEN GeneChaser *C. jejuni / coli* monotype PCR kit amplifies specific gene of *Campylobacter jejuni* and *Campylobacter coli* by PCR.

■ Kit content

Content	Quantity
Positive size marker(5µl per test)	110µl
Primer mixture(10µl per test)	260µl
Premixture(1 tube per test)	96 tubes
DNA extraction buffer(100µl per test)	10 ml

■ Protocol

(Food) Sample 25g + Hunt Enrichment Broth 225 mL
(Environment) Swab + Hunt Enrichment Broth 10 mL

(PCR condition)

95℃	3 min	1 cycle
94℃	20 sec	
63℃	20 sec	40 cycle
72℃	45 sec	
72℃	5 min	1 cycle

↓

Incubation 37℃, 3-4 hrs
(1 cell → 10³ cell)

↓

DNA extraction 1 hr

↓

PCR 1-2 hrs

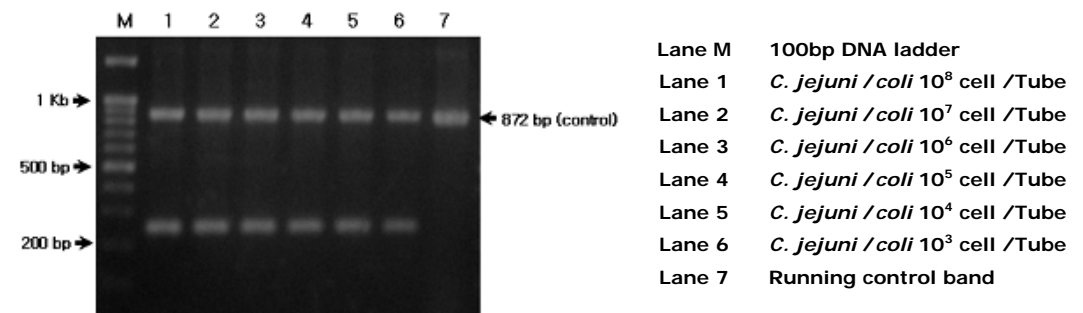
↓

Electrophoresis 30 min

↓

Date analysis

■ Result



■ Interpretation

- ▶ Detectable strain: Gene
 - *Campylobacter jejuni*: 257bp
 - *Campylobacter coli*: 257 bp
- ▶ Detection limit : 10³ cell /Tube