

GeneChaser *Bacillus cereus* Mono

Cat. NO.RDM-1121

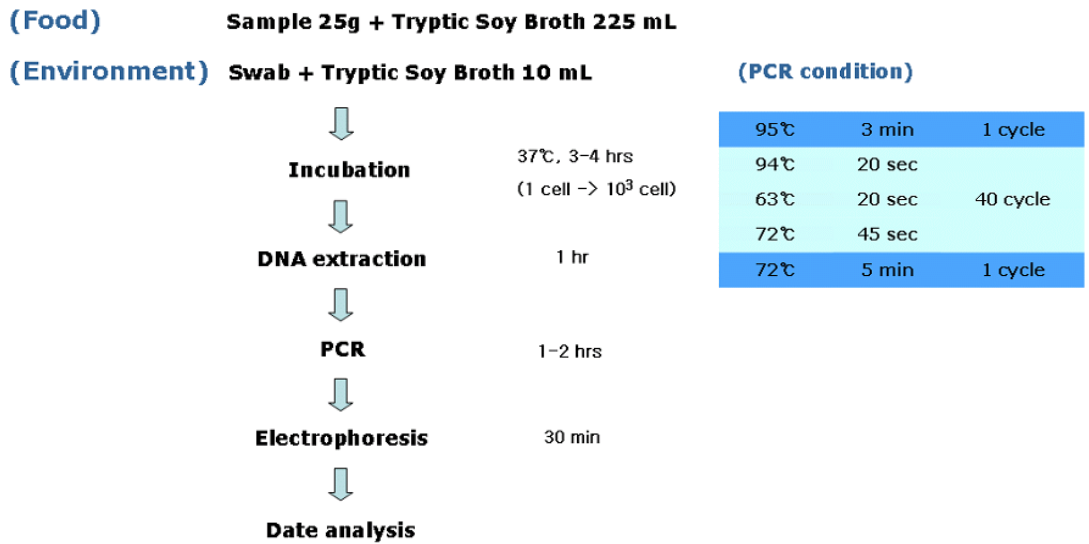
■ General description

Bacillus cereus causes two types of toxin-mediated food-borne illness, known as the diarrheal and emetic syndromes. A wide variety of foods including meats, milk, vegetables, and fish have been associated with the diarrheal type food poisoning. The vomiting-type outbreaks have generally been associated with rice products. The RapiGEN GeneChaser *Bacillus cereus* monotype PCR kit amplifies specific gene of *Bacillus cereus* by PCR.

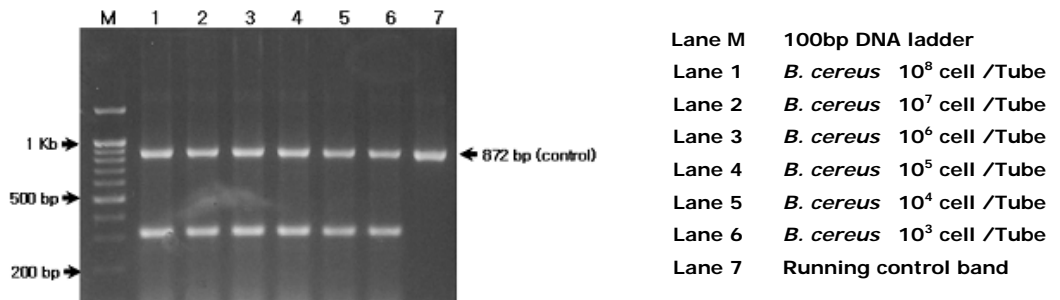
■ Kit content

Content	Quantity
Positive size marker(5µl per test)	110µl
Primer mixture(10µl per test)	260µl
Premixture(1 tube per test)	96 tubes
DNA extraction buffer(100µl per test)	10 ml

■ Protocol



■ Result



■ Interpretation

- ▶ Detectable strain: Gene
 - *Bacillus cereus*: 335bp
- ▶ Detection limit: 10³ cell /Tube