

**GeneChaser *Listeria monocytogenes* Mono**

Cat. NO.RDM-1124

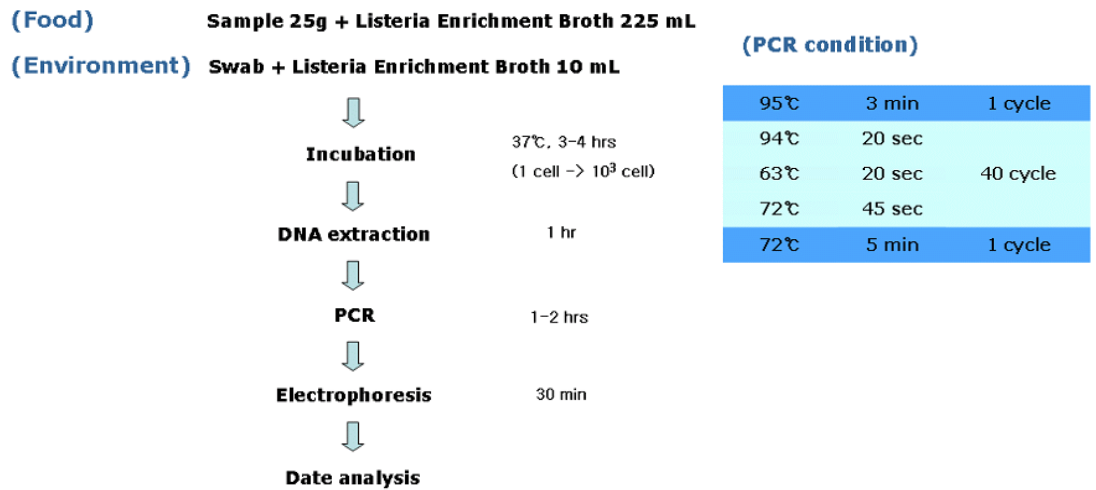
■ General description

*Listeria monocytogenes* is an intestinal bacterium that causes a serious food poisoning called Listeriosis in humans. *L. monocytogenes* has been associated with such foods as raw milk, ice cream, raw vegetables, and raw meats (all types). Its ability to grow at temperatures as low as 3°C permits multiplication in refrigerated foods. The RapiGEN GeneChaser *Listeria monocytogenes* monotype PCR kit amplifies specific gene of *Listeria monocytogenes* By PCR.

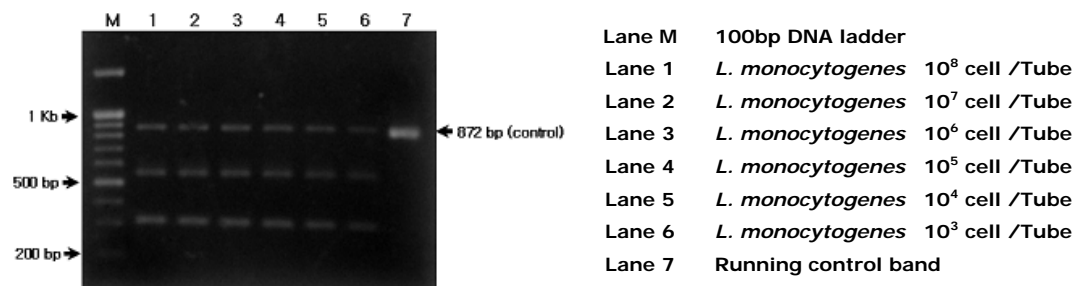
■ Kit content

Content	Quantity
Positive size marker(5µl per test)	110µl
Primer mixture(10µl per test)	260µl
Premixture(1 tube per test)	96 tubes
DNA extraction buffer(100µl per test)	10 ml

■ Protocol



■ Result



■ Interpretation

- ▶ Detectable strain: Gene
  - *Listeria monocytogenes* toxin (539bp)
  - *Listeria* spp. : 16S rRNA (324bp)
- ▶ Detection limit : 10<sup>3</sup> cell /Tube