

GeneChaser *Yersinia enterocolitica* Mono

Cat. NO.RDM-1128

General description *Yersinia enterocolitica* cause human yersiniosis. It is typically contracted through the consumption of undercooked meat products, unpasteurized milk, or water contaminated by the bacteria. The RapiGEN GeneChaser *Yersinia enterocolitica* monotype PCR kit amplifies specific gene of *Yersinia enterocolitica* by PCR.

Content	Quantity
Positive size marker(5 μ l per test)	110 μ l
Primer mixture(10 μ l per test)	260 μ l
Premixture(1 tube per test)	96 tubes
DNA extraction buffer(100 μ l per test)	10 ml

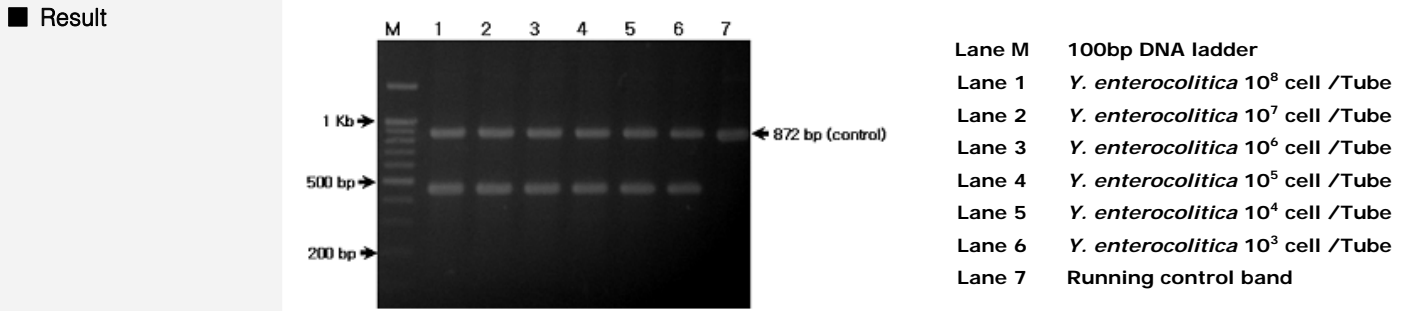
Protocol

(Food) Sample 25g + Peptone Sorbitol Bile Broth 225 mL
(Environment) Swab + Peptone Sorbitol Bile Broth 10 mL

(PCR condition)

95 $^{\circ}$ C	3 min	1 cycle
94 $^{\circ}$ C	20 sec	
63 $^{\circ}$ C	20 sec	40 cycle
72 $^{\circ}$ C	45 sec	
72 $^{\circ}$ C	5 min	1 cycle

Incubation 37 $^{\circ}$ C, 3-4 hrs (1 cell \rightarrow 10³ cell)
DNA extraction 1 hr
PCR 1-2 hrs
Electrophoresis 30 min
Gene analysis



Interpretation

- ▶ Detectable strain: Gene
 - *Yersinia enterocolitica* : 432bp
- ▶ Detection limit : 10³ cell /Tube